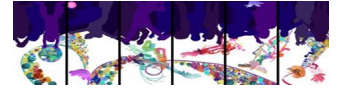


Sandy Lane Nursery and Forest School—Autumn 1 Newsletter



Welcome to the new school year, and a special welcome to our new families who are beginning their journey with Sandy Lane Nursery and Forest School. We welcome these children and parent/carers to our Sandy Lane family and look forward to the exciting half term ahead.



At Sandy Lane Nursery and Forest School we are proud of the great relationships we build with parents and carers. You are part of our school family and we invite you to support the school to help us be the best we can be. Can you spare an hour each 1/2 term to be part of our Friends of Sandy Lane parent and carers group? More information is on the last page of this newsletter. This group also helps with fundraising, with all money raised used to benefit all our children.



Our first event will be a coffee morning/afternoon to welcome any new group members of those of you who are interested to find out a little more. Dates will be shared on Tapestry and also displayed around school and there will be an am and pm session to fit with your child's nursery session. If you would like any more information about the group please just speak with me on the door at drop off or collection
Marcia Head teacher

Please can we ask that any parent/carer collecting children outside of the usual drop off/ collection times **NOT** to hold the main access door open to allow others to enter the school. This is for Health and Safety reasons, to ensure we are aware of who is in the building, which children have arrived later than usual and to protect children and staff

Nursery Activities



Garden and Sunshine Room - This term's 'big question' is 'What do I know about me?'

And the direction for learning for **Rainbow Room** this half term is 'What makes me special?'

Celebrations—This half term we will be learning about the Jewish festival of Sukkot, a celebration of the natural environment. We are also hoping to have a special visitor later this half term to help us celebrate National Service Dog Month.

Once the children have settled into our nursery routines we will also be starting our weekly **Forest School sessions**

Look out for more information and dates for these events on Tapestry

Healthy Eating

As a school we promote healthy eating and children are provided with a range of fruit and vegetables at snack time. If your child attends for 30 hours and so brings in a lunchbox please could you ensure it contains a range of healthy food. Our website gives some suggestions you may like to try. Can we also remind parents that we are a 'nut aware' school and so please do not include any nut products or anything containing chocolate spread your child's lunchbox. If you would like any help with healthy lunchbox ideas please speak to a member of staff in Garden Room who will be happy to help. **PLEASE REMEMBER TO LABEL YOUR CHILDS LUNCH**



Attendance—good attendance is the key to good progress

If your child is unwell and needs to be absent from nursery please can I remind you to ring the office on **01925 623640** or text **07415 869045** or report on our **School Spider App**. Thank you



Uniform—Children's play can be a messy business. Please could you ensure your child has a change of clothes in nursery and that they come to school dressed for the changing weather.

You may wish to consider purchasing a school t-shirt and/or sweatshirt. These can be ordered using our School Spider App.



PICK UP TIMES

AM Children—Doors Open 11:20am—Doors Close 11:30pm

30 Hr Children—Doors Open 2:15pm—Doors Close 2:30pm

PM Children—Doors Open 3:20pm—Doors Close 3:30pm

CHILDREN COLLECTED AFTER THESE TIMES WILL INCUR A LATE PICK UP FEE of £5.00 per 15 minutes PAYABLE ON THE DAY.

Primary school.

I know—your child has only just started nursery and we're already talking about primary school! If your child is due to start primary school in September 2024 you will have now receive notification to apply for a school place. The application is completed on-line. It is important that you meet the school criteria for the schools you are applying for and you must apply for 3 schools. If you only apply for one and you don't meet the criteria of that school then the local authority will allocate a school with space nearest to your home address. Contact Janet or Louise in the school office (623640) if you need any further information or support

Can you help?



All schools are busy places and Sandy Lane is no exception. We are always keen to welcome volunteers. If you have a special interest/talent or are just happy to help where needed and can spare a couple of hours as a one off or on a regular basis. Please speak to your child's room leader. Any help will be much appreciated

Termly Payments

This is payable every term:

Autumn Term payable September 2024

Spring Term payable January 2025

Summer Term payable April 2025

Termly payments don't cover the schools costs but are a contribution and also go towards little extras like birthday and Christmas gifts for all the children. The cost is based on all families contributing. **Charges for the term are £16 for children attending 15 hours and £32 for those who attend for 30 hours.** These payments can be made via our School Spider App.



Have you set up your Tapestry Account?



Tapestry is one of the main ways we share information with families so it is important that you log on regularly. Staff will also be busy over the next few weeks posting pictures which show just how well the children are settling in. You can post pictures and comments to us too using Tapestry Home learning

Staff also post a range of weekly home learning activities on Tapestry. As partners in your child's learning and development it is important that you support your child to complete these activities, many of which will enable them to gain extra practice and link experiences they have had in nursery. . If you have any questions about home learning or are having difficulty accessing Tapestry please speak to your child's key worker who will be happy to help.

Take a look at www.sandylanenurseryschool.co.uk The **Parents** tab will give you advice on how to help your child settle in to nursery as well as ideas on how you can support their learning and development at home.

Happy Birthday to you!!

Birthdays this half term include: Maia P, Artur, Antonina, Kayla, Delilah-Rose, Cherry, Ashton, and Benjamin.

Staff: Nikki C, Karen Rob, Saadet, Mark, Sarah, Nic S and Kirsten.



Outdoors.



We have an amazing outdoor area which children love to spend time in, whatever the weather. This means that you need to make sure your child is dressed appropriately for the changeable weather. Layers are good to keep children warm or, by removing a layer, cooler and each child will need a coat. For children who enjoy water play and mud we will provide waterproofs and, if they don't have their own in nursery, we have wellies which can be borrowed.

School holiday



We finish on Friday 25th October and return Monday 4th November

Jeans for Genes day, Friday 20TH SEPTEMBER

Wear jeans to nursery and donate £1 to this great cause"!



Additional sessions and wrap around care

Due to the reduced number of children in our mainstream classes at the start of the year we are able to offer parents of **children in Garden Room** the opportunity to purchase additional am or pm sessions as well as places for breakfast and after school club. If you are interested in purchasing the odd additional session, to enable your child to stay in nursery all day, please speak to a member of staff in the office (623640). Places are limited and offered on a first come first served basis. **Are you entitled to 30 hours?** If you think you may be eligible for 30 hours free childcare and have not yet applied please let Janet in the office know. Please note that 30 hour places are always limited.



Childcare
Choices

Our School Improvement Plan 2024-2025

At Sandy Lane Nursery and Forest School, we aim to work in partnership with all members of our school family to continue our journey of maintaining excellence. Our School Improvement Plan (SIP) sets out priorities that we want to achieve over the academic year. We would like to share our priorities with you, the positive impact these action will have for our children and how we can work together to help us achieve our goals.

Leadership and Management Led by Marcia

KEY PRIORITY – To continue to creatively secure ways to ensure the schools financial sustainability including wrap around care, our training offer and self funded places

IMPACT FOR CHILDREN – School will continue to be financially viable and therefore the children will continue to receive high quality experiences supported by knowledgeable and experienced staff. This will have a positive impact on outcomes for children

Behaviour and Attitudes

Led by Kirsten



KEY PRIORITY – To raise the profile of environmental sustainability and climate change across the whole school.

IMPACT FOR CHILDREN – Children and their families will have a greater understanding of environmental sustainability and how small changes in school and at home can have a positive impact

Quality of Education



Led by Jamie and Nikki

KEY PRIORITIES– To enhance current practice to support children's early writing . This will include securing improved parental engagement in home learning activities

IMPACT FOR CHILDREN- Children receive a broad and balanced curriculum including high quality early writing experiences. Families will engage in a range of home learning experiences which will positively impact on pupil progress

Personal Development



Led by Kirsten and Marcia

KEY PRIORITY –To embed the schools offer of parent and child experiences, with a focus on children with SEND

IMPACT FOR CHILDREN – Children and families will have more opportunities to take part in a range of activities arranged by the school.

How can parents/carers support our priorities? - We believe that working in partnership with parents/carers, as part of our Sandy Lane family, is vital to achieving our priorities and securing the improvement of the school. You can help us achieve our school priorities for this year by attending the parent/carer and child events, including workshops. These events will be an opportunity to share ideas of how you can support your child's learning at home, which will in turn have a positive impact on their overall progress.

Parents/carers can also help by ensuring your child's attendance is as good as it can be, enabling them to explore and engage in learning and develop their skills and knowledge by having time to practice and repeat activities. Helping your child at home with the learning staff post on Tapestry, working on their 'next steps' from VIP posts or Personal Plan targets. Using Tapestry to share things you have done at home with your child will also give staff valuable information about your child's interests and talents, enabling them to create activities based around your child's current fascinations to make new learning 'stick'.



You can also help us to think of other ways we can work with parents/carers and support the school with these priorities by joining our **Friends of Sandy Lane** parent and carer group. This is a friendly and informal group that meet half termly. Dates for meetings are posted on Tapestry and also displayed around school. If you would like any more information about this group please speak with Marcia or Kirsten on the door at drop off or collection.